



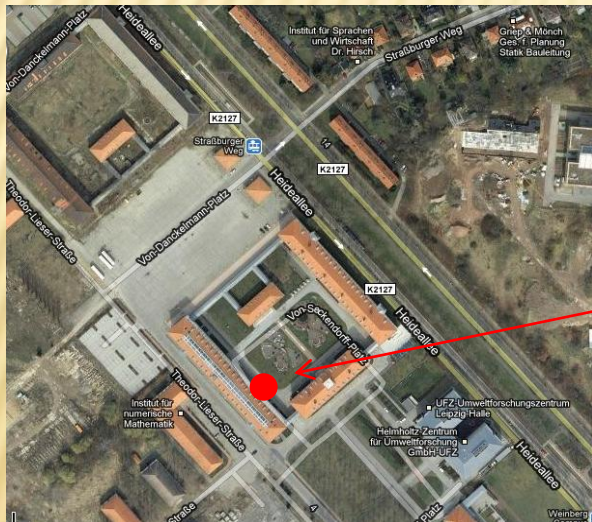
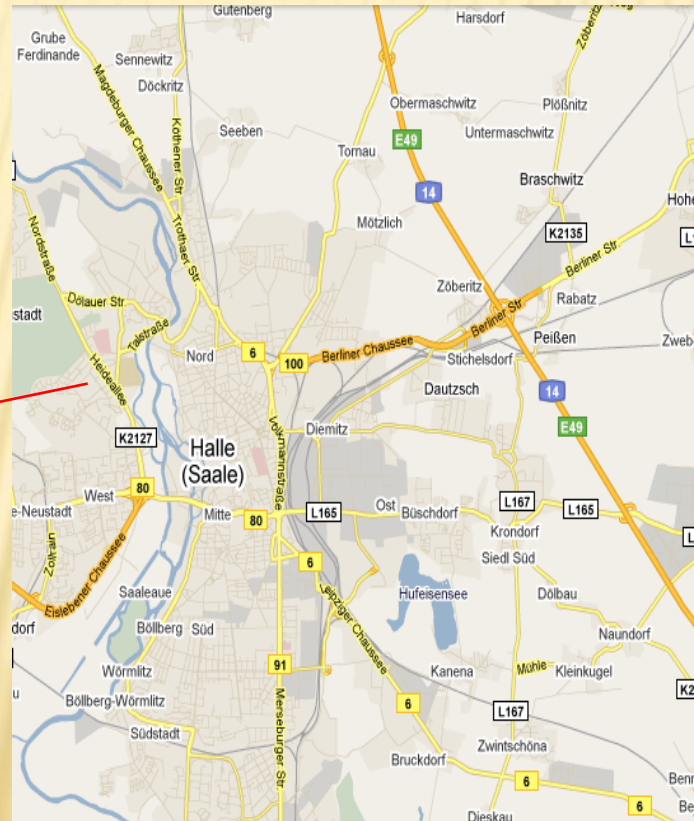
### How to get there:

#### By plane:

- ❖ Airport Halle / Leipzig
- ❖ Train to Halle Hauptbahnhof (Central Station)
- ❖ Tram No 4 direction „Kröllwitz“
- ❖ Tram station: **Strassburger Weg**

#### By car:

- ❖ North: A9/A14 direction Munich, Magdeburg, Halle
- ❖ South: A9/A14 direction Berlin / Magdeburg
- ❖ West: A38 Leipzig / Halle
- ❖ East: A4/A14 Leipzig / Halle



### European Biochar Symposium Halle (Saale) 2011 26. – 27.09.2011



INSTITUTE OF AGRICULTURAL AND  
NUTRITIONAL SCIENCES  
SOIL BIOGEOCHEMISTRY  
MARTIN-LUTHER-UNIVERSITY  
HALLE-WITTENBERG  
GERMANY



Biochar application to soil is currently discussed as part of new strategies for intelligent material flow management. Detailed biological, chemical und physical processes, careful optimization of technology and risk assessment are essential for successful further development and implementation of biochar technologies.



### General topics:

State of biochar research in Europe

#### ❖ Technology

- ❖ Pyrolysis systems
- ❖ Hydrothermal carbonization
- ❖ low temperature conversion

#### ❖ Biology / Ecology

- ❖ GHG emissions
- ❖ Soil flora and fauna

#### ❖ C sequestration

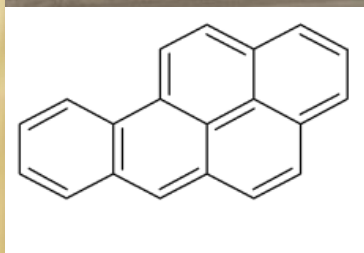
#### ❖ Ecosystem services

#### ❖ Material properties

#### ❖ Contamination, toxicology

#### ❖ History

#### ❖ Legal issues



### Preliminary program:

Time	26.09.2011	27.09.2011
9:00	Opening Session 1: Biology/ Ecology (GHG – Emissions) Keynote lecture: Dr. Claudia Kammann Inst. f. Pflanzenökologie JLU Gießen	Opening Session 5: Material properties, biochar characterization Keynote lecture: Dr. Cornelia Rumpel BIOEMCO; INRA / Versailles - Grignon
11:00	Coffee break	Coffee break
11:30	Session 2: Ecosystem services	Session 6: Technologies, pyrolysis systems, hydrothermal carbonization
13:30	Lunch	Lunch
14:30	Session 3: C sequestration	Session 7: Life cycle assessment, legal issues
16:00	Coffee break	Open discussion
16:30	Open space for specific topics	
17:30	Session 4: Toxicology	--
19:00	Walk to the brewery for dinner	--



### Registration and abstract submission:

Registration	Regular	Student	Comment
Until June 15 <sup>th</sup>	100 €	50 €	Early registration
After June 15 <sup>th</sup>	120 €	60 €	
Bank data: Bundesbankfiliale Magdeburg (reason for transfer: Biochar Symposium, J01090012) Bank number: 810 000 00; account number: 800 015 24 IBAN (for international remittance): 058100 0000 0080 001524			

Deadline for abstract submission: August 1<sup>st</sup>

Link for registration and submission:  
[www.landw.uni-halle.de/biochar2011](http://www.landw.uni-halle.de/biochar2011)

#### Manual Registration (address see below)

(Title) Name, Surname

Institution

Email address

Address

Soil Biogeochemistry  
 Martin-Luther-University  
 Von -Seckendorff-Platz 3  
 D -06120 Halle (Saale)

#### Prof. Dr. Bruno Glaser

Contact: Daniela Busch  
 (+49) 345 5522538  
 daniela.busch@landw.uni-halle.de

Katja Wiedner  
 (+49) 345 5522540  
 katja.wiedner@landw.uni-halle.de